

Technical sheet :

# **MLT 733-115 LSU**

---



Capacities		Metric
Max. capacity	Q	3300 kg
Max. lifting height	h3	6.9 m
Max. outreach	l4	3.9 m
Reach at max. height		0.9 m
Weight and dimensions		
Unladen weight (with forks)		7015 kg
Ground clearance center	m4	0.44 m
Wheelbase	y	2.81 m
Overall length to carriage (with hitch hook)	l11	4.85 m
Overall width	b1	2.39 m
Overall cab width	b4	0.95 m
Overall height	h17	2.38 m
Tilt-down angle	a5	134 °
Tilt-up angle	a4	13 °
External turning radius (over tyres)	Wa1	3.92 m
Standard tyres		Alliance - A580 - 460/70 R24 159A8
Drive wheels (front / rear)		2 / 2
Steering wheels (front / rear)		2 / 2
Performances		
Lifting		6.75 s
Lowering		5.65 s
Extension		6.5 s
Retraction		3.9 s
Crowd		3.15 s
Dump		2.55 s
Engine		
Engine brand		Deutz
Engine norm		Stage IV
Engine model		TCD 3.6 l
Number of cylinders - Capacity of cylinders		4 - 3621 cm <sup>3</sup>
I.C. Engine power rating / Power (kW)		116 Hp / 85 kW
Max. torque / Engine rotation		410 Nm @1600 tr/min
Drawbar pull (Laden)		7380 daN
Reversible fan		Option
Engine cooling system		4 radiators (water + intercooler + hydraulic oil + transmission oil)
Transmission		
Transmission type		Torque Converter
Gearbox		M-Varioplus
Number of gears (forward / reverse)		4 / 4
Max. travel speed (may vary according to applicable regulations)		32 km/h
Differential lock		Limited slip differential on front axle
Parking brake		Manual
Service brake		Oil-immersed multi-discs on front & rear axles
Hydraulics		
Hydraulic pump type		Load sensing pump
Hydraulic flow - Pressure		150 l/min - 270 Bar
Tank capacities		
Hydraulic oil		135 l
Fuel tank		120 l
Diesel Exhaust fluid (AdBlue® type)		10 l
Noise and vibration		
Noise at driving position (LpA) tested following NF EN 12053 norm		76 dB(A)
Environmental noise (LwA)		105 dB(A)
Vibration to whole hand/arm		< 2.50 m/s <sup>2</sup>
Miscellaneous		
Safety tractor homologation / cabin homologation		Safety tractor homologation - Cab ROPS - FOPS Level 2
Controls		JSM

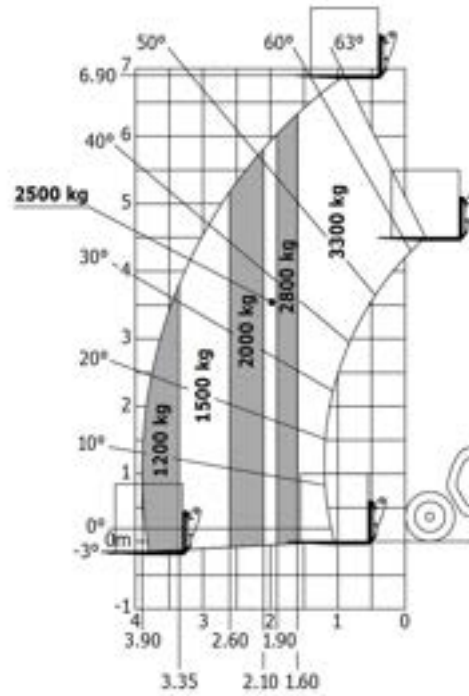
# Options / Finishing

S : Standard / O : Optional / - : Not available

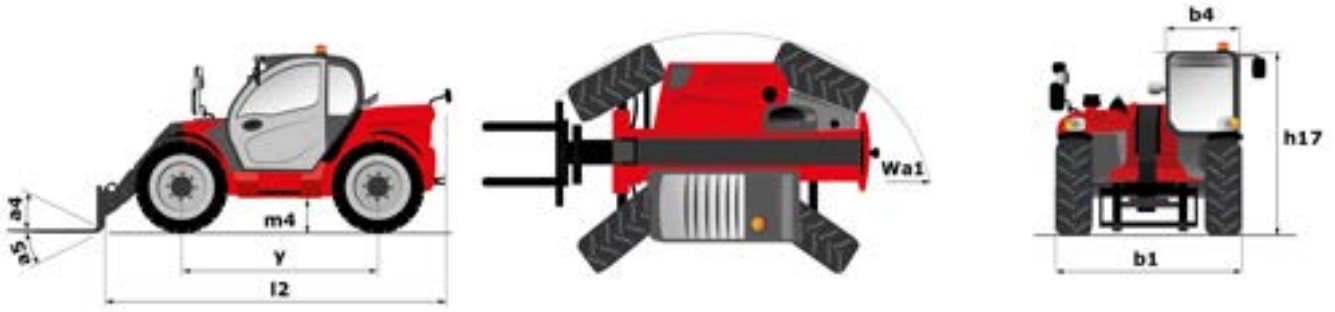
	Classic	Premium	Elite
<b>General</b>			
Self cleaning air prefilter	S	S	-
"Active CRC" boom suspension	O	O	-
Additional fuel tank (25 l)	O	O	-
Automatic rotating towing hitch on counterweight	O	O	-
Ladder hitch with choice of hooks	O	O	-
<b>Comfort</b>			
Low frequency air suspension cloth-covered seat (GRAMMER)	O	O	-
Mechanical cloth-covered seat (GRAMMER)	S	-	-
Air suspension cloth-covered seat (GRAMMER)	O	S	-
Tuner car radio (50 W)	S	-	-
Bluetooth USB car radio with integrated microphone (100 W)	O	S	-
Bluetooth USB car radio with extra microphone (100 W)	O	O	-
"Harmony" screen	S	S	-
Air conditioning with manual adjustment	O	S	-
Air conditioning with automatic adjustment	O	O	-
Low frequency air suspension cloth seat with heating	O	O	-
<b>Hydraulics</b>			
Hydraulic attachment locking	O	O	-
1 pair of pre-fitted Double Action rear hydraulic couplers	O	O	-
<b>Electricity / Safety</b>			
Audio warning on reverse	O	O	-
Front and rear work lights on cab (x4: 2 front + 2 rear)	S	-	-
Front and rear LED work lights on cab (x4 : 2 front + 2 rear)	O	S	-
Extra front wiper	O	S	-
Boom Work Lights (on fixed part) (x2)	O	O	-
<b>Cab options</b>			
Lateral wiper	O	O	-
<b>Boom options</b>			
Easy Connect System (E.C.S.)	S	S	-
Continuous flow hydraulics	O	O	-
Return pipe to hydraulic oil tank	O	O	-
Electrovalve for 2 hydraulic functions (on boom head)	O	O	-
<b>Engine &amp; Filtration</b>			
Auto reversing fan	O	O	-
<b>Chassis options</b>			
Manual towing hitch	S	S	-

# Load chart

Rough terrain load chart (EN 1459 B) Metric



# Dimensional drawing





Siège Social  
430 rue de l'Aubinière - 44150 Ancenis Cedex - France  
Tel: +33(0)2 40 09 10 11 - Fax: +33 (0)2 40 09 10 97  
[www.manitou.com](http://www.manitou.com)



This brochure describes versions and configuration options for Manitou products which may be fitted with different equipment. The equipment described in this brochure may be standard, optional or not available depending on version. Manitou reserves the right to change the specifications shown and described at any time and without prior warning. The manufacturer is not liable for the specifications given. For more information, contact your Manitou dealer. Non-contractual document. Product descriptions may differ from actual products. List of specifications is not comprehensive. The logos and visual identity of the company are the property of Manitou and may not be used without authorisation. All rights reserved. The photos and diagrams contained in this brochure are provided for information only.

MANITOU BF SA - Limited company with board of directors - Share capital: 39,668,399 euros - 857 802 508  
RCS Nantes